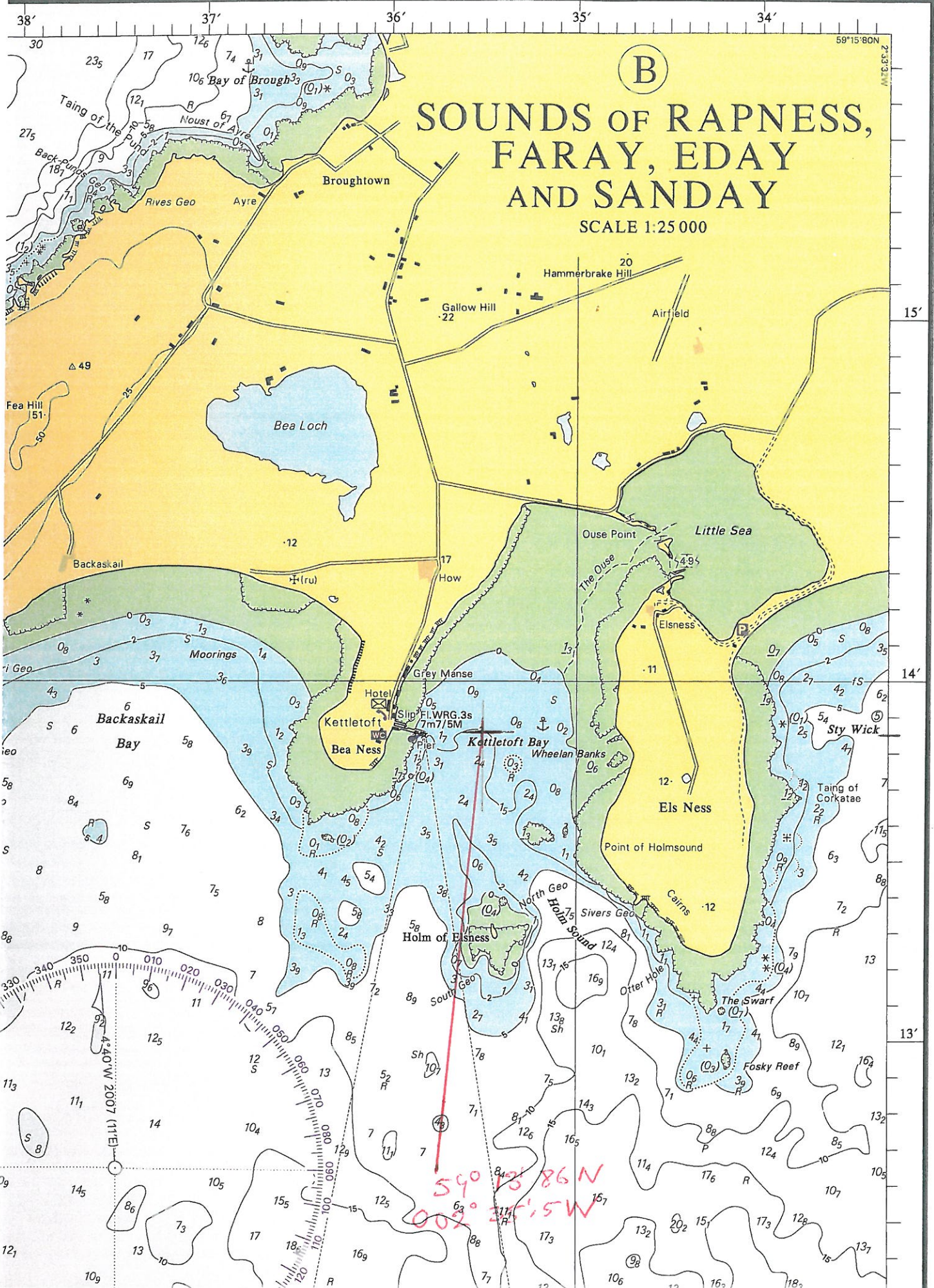
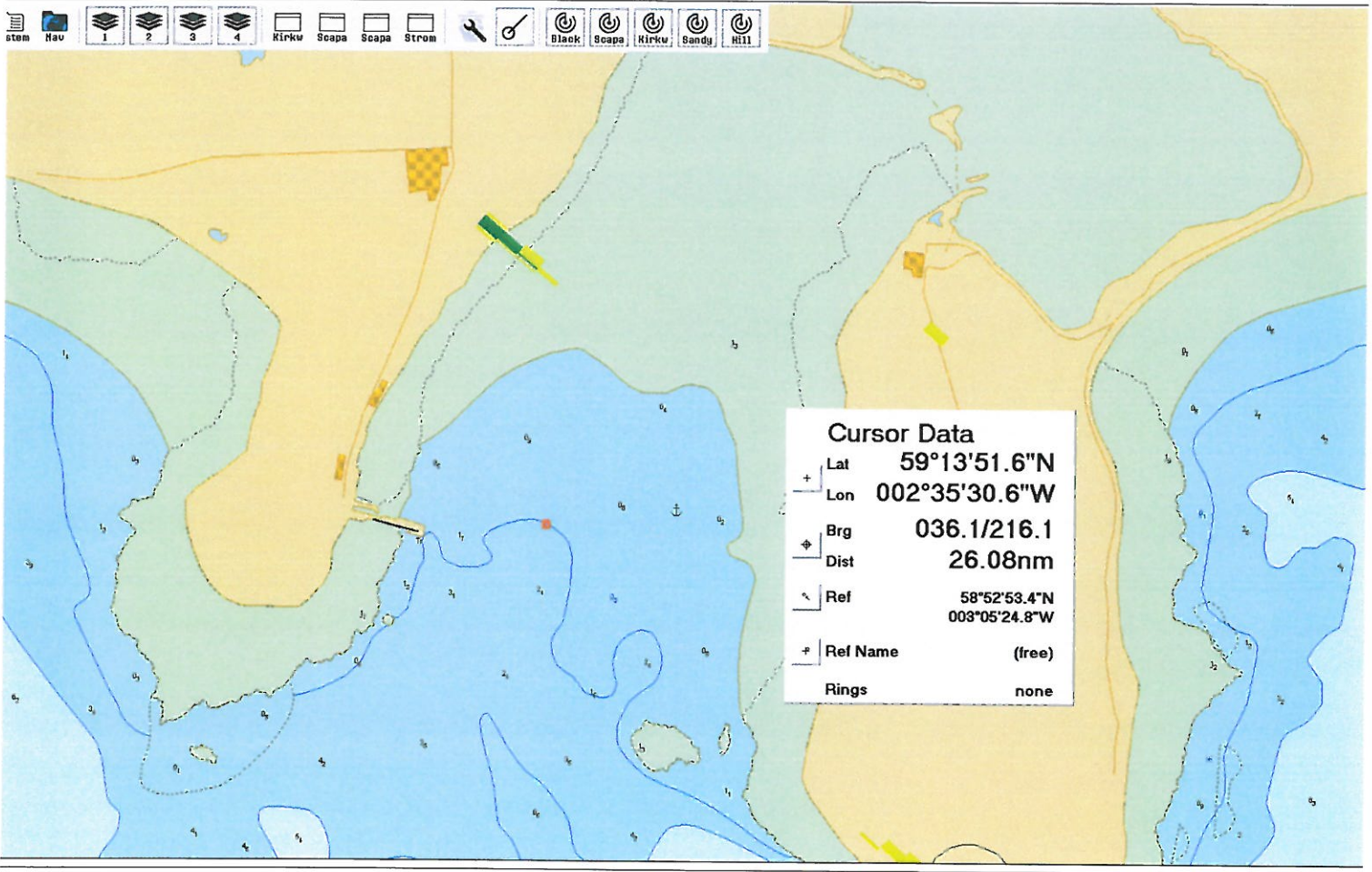


derived from Crown Copyright
 it may be reproduced in any
 form of the copyright owners.
 If it is addressed, in the first
 2DN, UK.

IMPORTANT - SEE RELATED ADMIRALTY PUBLICATIONS
 Notices to Mariners (Annual, Permanent, Preliminary and Temporary); Chart 5011 (Symbols and Abbreviations);
 The Mariner's Handbook (especially Chapters 1 & 2 on the use, accuracy and limitations of charts); Sailing Directions (Pilots);
 List of Lights & Fog Signals; List of Radio Signals; Tide Tables (or their digital equivalents).
KEEP CHARTS AND PUBLICATIONS UP-TO-DATE AND USE THE LARGEST SCALE CHART APPROPRIATE





59° 13' 18.6 N.
002° 35' 5" W